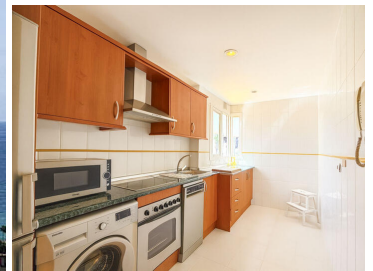









2 sovrum Lägenhet till salu i Manilva, Málaga



269.000€



Stunning Top-Floor Apartment in Manilva – With Panoramic Sea & Golf Views Perched on the top floor of a sought-after residence in an enclosed urbanisation, this exceptional apartment combines modern comfort with Mediterranean charm Boasting an enviable east and south-facing orientation, the property is bathed in natural light throughout the day, while offering breathtaking uninterrupted sea and golf views that create an undeniable wow factor Thoughtfully presented in excellent condition and partly renovated to a high standard, the interior strikes the perfect balance between style and coziness The spacious living areas open seamlessly onto a private terrace, ideal for al fresco dining, while the solarium invites you to relax and indulge in the spectacular coastal panorama Adding to its appeal, the apartment includes private parking and is within walking distance to the sandy beaches of Manilva, ensuring the ultimate blend of convenience and coastal lifestyle Whether as a serene holiday retreat, a stylish permanent residence, or a smart investment, this top-floor gem captures the very essence of coastal living in the Costa del Sol

Top Floor Apartment, Manilva, Costa del Sol
 2 Bedrooms, 2 Bathrooms, Built 101 m², Terrace 12 m²
 Setting : Close To Shops, Close To Town, Urbanisation
 Orientation : East, South
 Condition : Excellent
 Pool : Communal
 Climate Control : Air Conditioning
 Views : Sea, Mountain, Golf, Panoramic, Pool
 Features : Lift, Fitted Wardrobes, Private Terrace, Solarium, Ensuite Bathroom, Marble Flooring, Double Glazing
 Furniture : Optional
 Kitchen : Fully Fitted
 Garden : Communal, Landscaped
 Security : Gated Complex, Entry Phone, Alarm System, 24 Hour Security
 Parking : Open, Street, Communal
 Utilities : Electricity
 Category : Holiday Homes, Investment, Resale

-  2 sovrum
-  Shops: 900 Meters
-  Category - Resale
-  Features - Double Glazing
-  Features - Lift
-  Furniture - Optional
-  Kitchen - Fully Fitted

-  2 badrum
-  Category - Holiday Homes
-  Climate Control - Air Conditioning
-  Features - Ensuite Bathroom
-  Features - Private Terrace
-  Garden - Communal
-  Orientation - East

-  101m² Bygg storlek
-  Category - Investment
-  Condition - Excellent
-  Features - Fitted Wardrobes
-  Features - Solarium
-  Garden - Landscaped
-  Orientation - South