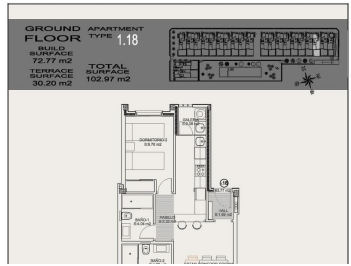




## 2 sovrum Villa till salu i Torrevieja, Alicante

277.200€



New Residential Development in Torrevieja, Just 1 km from the Sea

### Modern Apartments with 2 and 3 Bedrooms

Located in the vibrant Altos del Sol area of Torrevieja, this new residential development offers a variety of apartment options with 2 and 3 bedrooms. Ground-floor units come with private gardens, while top-floor units feature private solariums for exclusive outdoor relaxation. Additionally, the complex includes one townhome, catering to those looking for added space and privacy. Each unit includes an underground parking space, and storage rooms are available as an optional feature.

### Spacious Communal Areas and Family-Friendly Amenities

The residential complex is thoughtfully designed with ample communal spaces, featuring landscaped gardens that create a peaceful environment. Families can enjoy a large community swimming pool with a dedicated children's area, perfect for relaxing and socializing under the warm Mediterranean sun. The development is located around 1 km from "Playa de Los Locos," offering convenient beach access for residents.

### Top-Quality Finishes and Energy-Efficient Features

These homes stand out for their high-quality finishes and attention to detail. Each unit is equipped with a 600W photovoltaic solar panel system, providing an eco-friendly energy solution. Additional premium features include built-in barbecues on the solariums, armored front doors, built-in wardrobes with interior fittings, bathroom furniture with

- |                    |                                 |                                 |
|--------------------|---------------------------------|---------------------------------|
| 2 sovrum           | 2 badrum                        | 72m <sup>2</sup> Bygg storlek   |
| Simbassäng         | Garden                          | Communal Pool                   |
| Gated              | Number of Parking Spaces: 1     | Air Conditioning: Pre-Installed |
| Near Trees         | Near Schools                    | Near Commercial Center          |
| Near Bus Route     | Location: Coastal, Urbanisation | Double Bedrooms: 2              |
| Beach: 1000 Meters | Terrace: 30 Msq.                | Useable Build Space: 63 Msq.    |
| Parking - Space    |                                 |                                 |