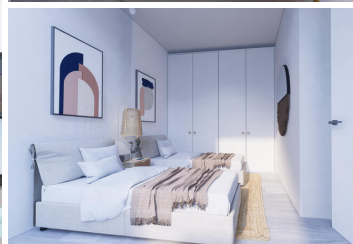


2 sovrum Villa till salu i Torre Pacheco, Murcia

280.000€



Residential VILLAS ATENEA GOLF is a luxury complex of independent one level villas with private swimming pool, open spaces and solarium in each property. These villas have 2/3/4 bedrooms and 2 fitted bathrooms. Designed with a contemporary style and open planned concept, comprising a fully-fitted kitchen and lounge-dining room. The development is located in Torre Pacheco (Murcia), 20 min. far to the beach, surrounded by all services, parks, sports facilities and several Golf Courses. The property will meet the highest standards and will be equipped with: Lined wardrobes in white-lacquered finish, with drawers, shelves and coat rack in all bedrooms. Kitchen cupboards with gloss-lacquered finish doors and edges. Natural quartz, Silestone or similar countertop. Appliances included, (ceramic hob, extractor fan, oven and microwave in column, integrated both fridge-freezer and dishwasher). 1st quality porcelain sanitary ware in bathrooms. Design vanity unit with porcelain washbasins and mirror. Built-in shower column with shower head, and non-slip shower tray with hidden drain. Clear glass shower screens. Summer kitchen in solarium terrace, with sink and pre-installation for washing machine and mini-fridge. Tiling with thermal insulation, waterproofing with asphalt cloth and ceramic stoneware finish. Metal staircase for access from the outside. Swimming pool with stainless steel outdoor shower. Complete purification equipment. LED spotlights. Interior lighting in kitchen, living room, hallway and bathrooms with LED spotlights. Integrated LED spotlights in garden wall and solarium. Pre-installation for air conditioning. Open parking space on the plot.

- 🏠 2 sovrum
- 📏 192m² Tomtstorlek
- ✅ Air Conditioning Central System
- ✅ Landscaped Garden
- ✅ Air Conditioning
- ✅ Private Swimming Pool
- ✅ Large Terrace
- ✅ Covered Terrace

- 🚿 2 badrum
- ✅ Simbassäng
- ✅ Private Garden
- ✅ Covered Seating Area
- ✅ Walk-in Shower
- ✅ Private Garden
- ✅ Landscaped Private Garden
- ✅ Roof terrace

- 🏠 71m² Bygg storlek
- ✅ Air Conditioning Hot and Cold
- ✅ Landscaped Private Garden
- ✅ Double Glazing
- ✅ Fitted Wardrobes
- ✅ Outdoor Shower
- ✅ Covered Seating Area
- ✅ Blinds