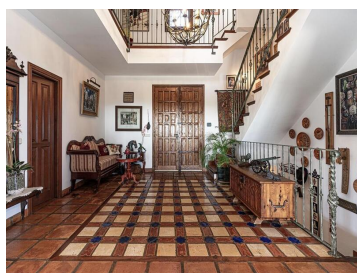


## 8 sovrum Lantställe till salu i Manilva, Málaga

1.790.000€



UNIQUE VILLA FRONT LINE GOLF, OPEN PANORAMIC SEA VIEW AND WALKING DISTANCE TO MARINA, RESTAURANTS AND AMENITIES.

Villa can be converted into a beautiful BOUTIQUE HOTEL as there is still land to be built on.

Great location, walking distance to all amenities.

La Duquesa is located in one of the least spoilt areas on the Costa del Sol. An upcoming area with heaps of history and a genuine touch of Andalucía.

This beautiful villa is set in the heart of La Duquesa. This villa is designed in the Spanish Cortijo style with a lot of character, soul and endless possibilities. Situated in private, quiet and well-established area within La Duquesa.

Unspoiled view like none other on the Costa del Sol being a stone's throw from all amenities.

Stunning undisturbed panoramic sea and golf views.

Large plot of land with immaculate manicured garden, small children pool cascading into 50m<sup>2</sup> pool. Sunny and shaded terraces on all sides of this beautiful villa. High quality jacuzzi (Sundance) in the garden. Natural stone floor & wood deck at the pool area. Entrance with ample parking, garden fountain. Welcoming brass lions. 3 stories with tower. Cool shaded terrace in the summer. Main lounge with open fireplace, antique bar and built-in bookshelves. Capacious dining room.

Entrance hall with large rustic doors, large staircase with landing to bedrooms. 3 spacious bedrooms on first level (with on suite bathrooms), studio atelier at the top of the tower. Kitchen area is spacious rustic kitchen with ample worktop space and lounge area with own open fireplace. For a cosy family feeling.

There is another wing next to the lounge that can be used as additional apartment. The basement has its own bodega/wine cellar and entertainment room with bar and film projector. Fully insulated Sauna. Workshop. Garage space for 2 cars at least.

Very well organised and well kept house

🛏 8 sovrum

📏 3.233m<sup>2</sup> Tomtstorlek

🛁 6 badrum

🗳 Simbassäng

🏠 783m<sup>2</sup> Bygg storlek