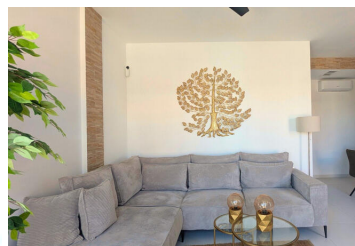
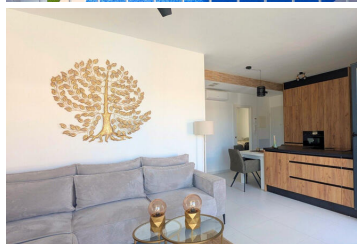
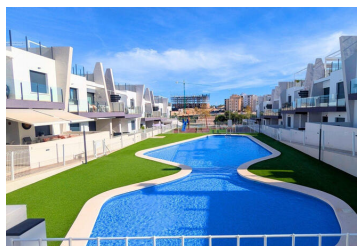











2 спальная комната квартира продается в San Miguel de Salinas, Alicante





299.000€



We present this exceptional corner penthouse in San Miguel de Salinas – a modern, uniquely designed home built in 2024, offering stunning views and outstanding outdoor living. Ideally located close to all amenities, this penthouse stands out immediately thanks to its unique layout, different from all other penthouses in the development. The interior is bright and welcoming, flooded with natural light throughout the day thanks to its corner position and large windows. Inside, the property features a custom-designed kitchen and sliding doors instead of standard doors, giving the home an elegant, open and modern feel. The living area connects beautifully to the outdoor spaces, making it ideal for both everyday living and entertaining. One of the key highlights is the impressive private rooftop solarium, fully equipped for outdoor enjoyment. It includes an outdoor kitchen, pergola, and even a shower, making it the perfect place to relax, dine, or enjoy the sunshine while taking in the panoramic views over the Torrevieja salt lake and the park in front. The community offers excellent shared facilities, including a large swimming pool and a children's playground, ideal for families or those who enjoy resort-style living. The penthouse also comes with air conditioning, ensuring comfort all year round. This is a rare opportunity to own a high-quality, uniquely designed penthouse with exceptional outdoor features and one of the best views in the area.

-  2 спальни
-  Balcony
-  Open plan
-  Dishwasher
-  Outdoor shower

-  2 ванные комнаты
-  Fitted wardrobes
-  Alarm system
-  Cable TV

-  77m² Размер сборки
-  Outdoor kitchen
-  Microwave
-  Kitchen appliances