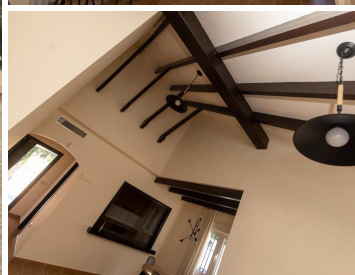
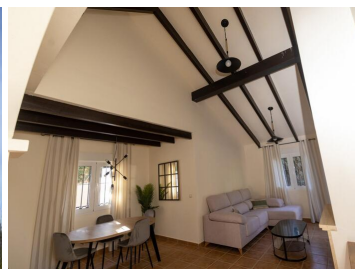


















## 3 спальная комната вилла продается в Fuente Alamo, Murcia

315.000€



KEY READY VILLA IN FUENTE ALAMO, MURCIA&#13;&#13;Residential of townhouses, independent and semi-detached villas in Fuente Álamo, Murcia.&#13;&#13;There are seven different models of houses to choose from, designed to suit everyone's taste. &#13;&#13;Rustic designs combined with top quality materials and a focus on comfortable living space there is something for everyone.&#13;&#13;The residents of this private community of beautiful, spacious homes will also be able to enjoy their own communal gardens and swimming pools.&#13;&#13;This unusual design villa has 3 bedrooms and 2 bathroom, independent kitchen, living room with patio doors leading onto the covered porch.&#13;&#13;An options for a private pool at an extra cost.&#13;&#13;Fuente Álamo de Murcia is a town and municipality in the Region of Murcia, southern Spain. It is situated 22 km northwest of Cartagena and 35 km south west of Murcia. &#13;&#13;The town lies in the basin of the Mar Menor surrounded by the mountains of Algarrobo, Los Gómez, Los Victorias and the Carrascoy.&#13;&#13;The water from these mountains flows down into the Rambla de Fuente Álamo and then onto the Mar Menor. &#13;&#13;Fuente Álamo located 30 minutes from Murcia - Corvera airport.&#13;

- |   |   |   |
|---|---|---|
|  3 спальни                        |  2 ванные комнаты                |  178m <sup>2</sup> Размер сборки |
|  861m <sup>2</sup> Размер участка |  Garden                          |  Gated                           |
|  Number of Parking Spaces: 1      |  Air Conditioning: Pre-Installed |  Double Bedrooms: 3              |
|  Key Ready                        |  Terrace: 30 Msq.                |  Location: Rural, Urbanisation   |
|  Beach: 7500 Meters               |  Useable Build Space: 148 Msq.   |  Parking - Space                 |
|  Storage / Trastero               |   |   |