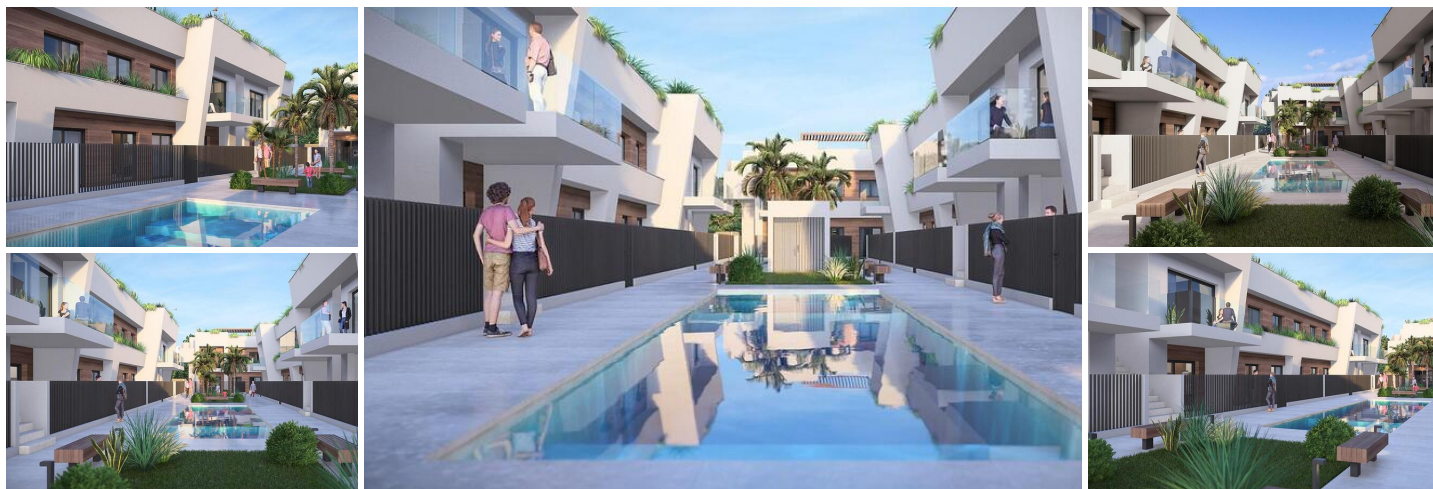


2 спальная комната городская тюрма продается в Torre Pacheco, Murcia

220.000€



New Construction Homes in Torre-Pacheco, Costa Cálida

Modern Bungalows with Exceptional Features

Discover a new residential complex in Torre-Pacheco, offering 24 stylish bungalows with 2 or 3 bedrooms. Choose between ground-floor homes with spacious terraces or first-floor units boasting private terraces and solariums. Each solarium includes a pergola, a barbecue area, and reinforced roofing, perfect for installing a jacuzzi. All homes come with a designated parking space and fully installed air conditioning, ensuring comfort year-round.

Prime Location in Torre-Pacheco

Nestled in the heart of Torre-Pacheco, this development enjoys proximity to essential amenities, including supermarkets, shops, bars, and restaurants. The vibrant town center, with its charming Spanish ambiance, is within walking distance. For beach lovers, the stunning Mar Menor is just a 10-minute drive away, offering golden sands and crystal-clear waters.

Enjoy Outstanding Community Amenities

The complex features a beautifully landscaped community area with lush gardens and a sparkling pool, providing a serene retreat to relax and unwind. The area's sunny climate, averaging 320 days of sunshine annually, complements these outdoor spaces perfectly.

Surrounded by Award-Winning Golf Courses

Torre-Pacheco is a golfer's paradise, surrounded by some of the most renowned golf courses in Spain. These courses are just a short drive away, making it an ideal location for golf enthusiasts.

- | | | |
|------------------------------------|-------------------------|----------------------------------|
| 🏠 2 спальни | 🚿 2 ванные комнаты | 🏠 68m ² Размер сборки |
| ✅ Бассейн | ✅ Communal Pool | ✅ Near bus route |
| ✅ BBQ | ✅ gated | ✅ Number of Parking Spaces: 1 |
| ✅ Near Golf / Golf Resort Property | ✅ Near Schools | ✅ Near Commercial Center |
| ✅ Double Bedrooms: 2 | ✅ Solarium: Yes | ✅ Terrace: 77 Msq. |
| ✅ Near Train Station | ✅ Air Conditioning: Yes | ✅ Useable Build Space: 58 Msq. |
| ✅ Location: Rural, Urbanisation | ✅ Beach: 11000 Meters | ✅ B |