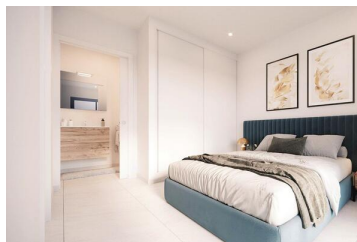


## 2 спальная комната квартира продается в La Mata, Alicante

**255.435€**






Spectacular, new construction apartments situated on the ground floor in La Mata, Torrevieja, Alicante. Properties featuring a bright & spacious build of 81m<sup>2</sup> & consisting of an open-plan, living-dining room & fully fitted kitchen with a laundry room. 1 double bedroom, 1 family bathroom, plus 1 master bedroom & 1 en-suite bathroom. Its exterior offers a private garden/terrace. Designed & built using top quality materials & finishes, including motorized roller blinds &, built-in & interior lined wardrobes. Pre-installation of air conditioning (hot & cold) via ducts. The building supplies elevators & each apartment has a parking space. Situated in a modern, gated residential complex providing impressive tropical gardens, large swimming pool, children's pool, gym, spa, children's playground & parking for bicycles. Located in La Mata, Torrevieja & surrounded by a wide range of good restaurants, shops, supermarkets & all amenities. Several golf courses within a short drive, La Marquesa Golf & Villamartin Golf, as well as the popular Habaneras shopping centre, & the beautiful beach of La Mata is just a few minutes walk.

Available from 255,435 Euros.

Do not hesitate to contact us today!

We will guide you every step of the way!

- |  |   |  |
|--|---|--|
|  2 спальни                             |  2 ванные комнаты            |  81m <sup>2</sup> Размер сборки |
|  92m <sup>2</sup> Размер участка       |  Бассейн                     |  Air Con (Pre-Installation)     |
|  Double Glazing                        |  Fitted Kitchen              |  Gym - Communal                 |
|  Lift                                  |  Utility Room                |  Clinic - Within 5 minute drive |
|  Hospital - Within 5 minute drive      |  Pharmacy - Walking Distance |  Bank - Walking Distance        |
|  Bars & Restaurants - Walking Distance |  Beach - Walking Distance    |  Golf - Within 30 minute drive  |
|  Garden - Communal                     |  Park - Walking Distance     |  Shops - Within 5 minute drive  |
|  Private Parking                       |  Garden - Private            |  Terraced Areas                 |