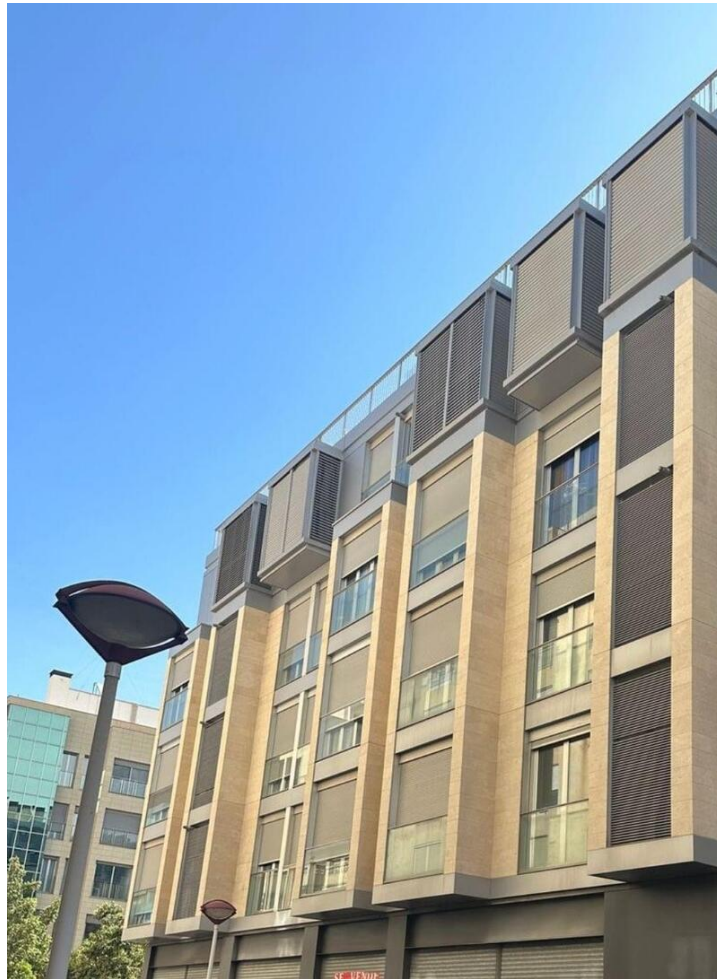




2 bedroom Apartment for sale in Elx/Elche, Alicante

225,000€



This new development of apartments stands out for its privileged location in one of the most representative areas of the city, with direct views of the course of the Vinalopó River and the emblematic Santa Teresa Bridge. Just a few steps from the historic center, these modern homes are surrounded by a wide range of services, stores, green areas and cultural spaces, making this development an excellent option for both living and investment.

OUTDOOR AREA The urban environment surrounding the building offers an ideal combination of tranquility, connection to nature and proximity to the city's main points of interest. The homes facing the river have large private terraces, perfect for enjoying the open views and natural light throughout the day. The building's architecture has been designed to blend in with the urban landscape, offering a modern and elegant style.

INDOOR AREA The apartments are available in 2 or 3 bedroom configurations with 2 full bathrooms, all with high quality finishes. The homes include parquet flooring, fully equipped kitchen with appliances, smooth paint, built-in closets lined with drawers and a solid armored security door. Comfort is guaranteed thanks to the ducted air conditioning system already installed, offering efficiency and climate control all year round.

COMMON AREA The building has been conceived to provide comfort, security and functionality, in a well-connected urban environment with all the necessary services. Its excellent location, together with the quality of the finishes and unobstructed views, make this development a perfect option for those who value design, modernity and proximity to the historic heart of the city.


ELCHE Elche, in the province of Alicante, is a city with an impressive cultural heritage and a vibrant atmosphere. Its famous palm groves, a World Heritage Site, are emblematic and unique in Europe, along with its historical legacy that includes the Misteri d'Elx, a sacred-lyrical drama. Tourism in Elche focuses on its palm groves, gardens, natural parks and its nearby beaches such as Arenales del Sol. In addition,




Property marketed by Inmo Investments

www.spainpropertyportal.com/

 2 bedrooms

 2 bathrooms

 72m² Build size