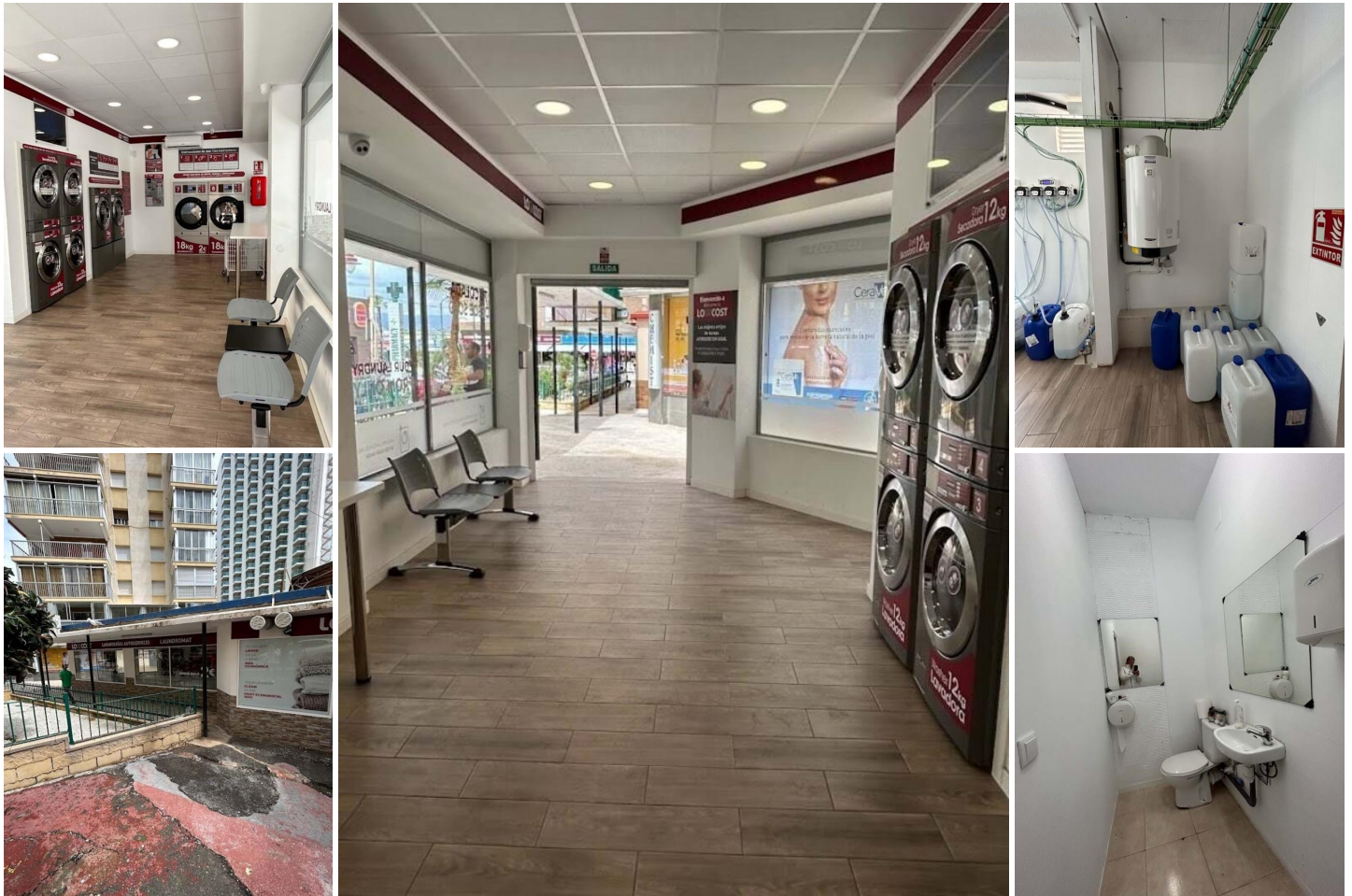


Other for sale in Torrevieja, Alicante
250,000€



Commercial premises in the nerve centre of Benidorm:

This commercial premises, strategically located in the heart of Benidorm's nerve centre, offers an exceptional opportunity to establish a business in a prime location, surrounded by hotels, restaurants and just steps away from the well-known Levante Beach. This property provides visibility and accessibility, making it an ideal choice for those looking to stand out in a vibrant commercial environment.

Outstanding Features:

Central Location: This commercial property is located in the nerve centre of Benidorm, ensuring a central and easily accessible location for residents and tourists alike. The proximity to hotels, restaurants and Levante Beach makes it a focal point.




2. Spacious and Versatile Space: The premises offer a generous and versatile space that can be adapted to suit a variety of commercial needs. The versatility of the space allows for a wide range of possibilities for commercial ventures.




3. High Visibility: Given its strategic location, the premises offers exceptional visibility. Surrounded by commercial and tourist activity, it is an ideal place to attract the attention of passers-by and potential customers.



4. Access to Urban Amenities: Proximity to a variety of urban amenities, such as public transport, shopping and entertainment, adds convenience for both business owners and customers.

5. Proximity to Levante Beach: Being within walking distance of Levante Beach adds an additional attraction. Visitors and residents who frequent this popular beach can be a valuable source of clientele.

Commercial Opportunity: This commercial premises represents a strategic opportunity for those looking to establish

-  0 bedrooms
-  20m² Plot size
-  Laundry room

-  0 bathrooms
-  Near public transport
-  Parking, Uncovered

-  96m² Build size
-  Walking distance to beach