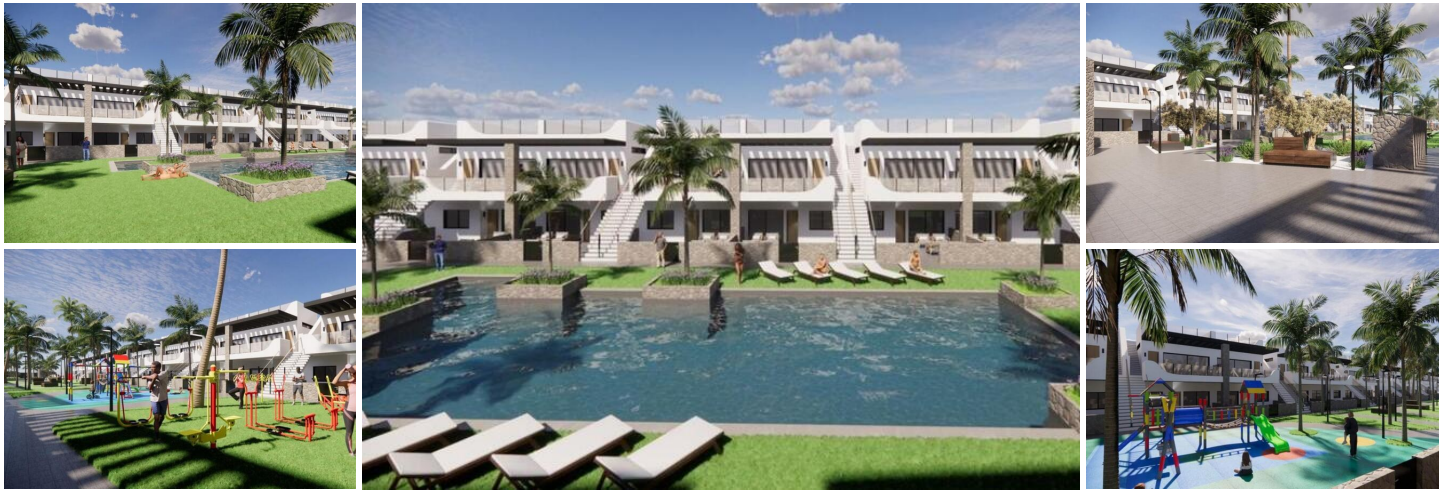





## 2 bedroom Townhouse for sale in Orihuela Costa, Alicante

280,000€



**NEW BUILD RESIDENTIAL COMPLEX IN PUNTA PRIMA** New Built residential complex of bungalow apartments and 7 detached villas in Punta Prima. The bungalows are distributed in three blocks. Ground floor bungalows with private garden and top floor bungalows with private solarium. Beautiful bungalow with 2 or 3 bedrooms, open plan kitchen with the lounge area, fitted wardrobes, utility room and spacious terraces. Each bungalow has parking space. The urbanization will offer nice green areas with a playground for children, a gym and two communal pools. Complex located a few meters from the centre of Punta Prima where you will find all the amenities you may need. In the surroundings you will find a wide range of nice restaurants, cafes, supermarkets, pharmacies and all the amenities you may need. Punta Prima, located just 5 km from Torrevieja, is characterized by good communication and health infrastructures, the proximity to Alicante airport, and the number of services open throughout the year. Just 10 km away we can find the golf courses of Villamartín, Campoamor, Las Ramblas, Las Colinas and Lo Romero, as well as the commercial centres of La Zenia and Habaneras.

- |   |   |   |
|---|---|---|
|  2 bedrooms |  2 bathrooms |  72m <sup>2</sup> Build size |
| <input checked="" type="checkbox"/> Communal Pool   | <input checked="" type="checkbox"/> Gated   | <input checked="" type="checkbox"/> Solarium: Yes   |
| <input checked="" type="checkbox"/> Number of Parking Spaces: 1                               | <input checked="" type="checkbox"/> Near Schools  | <input checked="" type="checkbox"/> Near Commercial Center  |
| <input checked="" type="checkbox"/> Location: Coastal, Urbanisation                           | <input checked="" type="checkbox"/> Air Conditioning: Pre-Installed                             | <input checked="" type="checkbox"/> Double Bedrooms: 2  |
| <input checked="" type="checkbox"/> Gym   | <input checked="" type="checkbox"/> Terrace: 81 Msq.  | <input checked="" type="checkbox"/> Beach: 700 Meters   |
| <input checked="" type="checkbox"/> Useable Build Space: 61 Msq.                              |   |   |