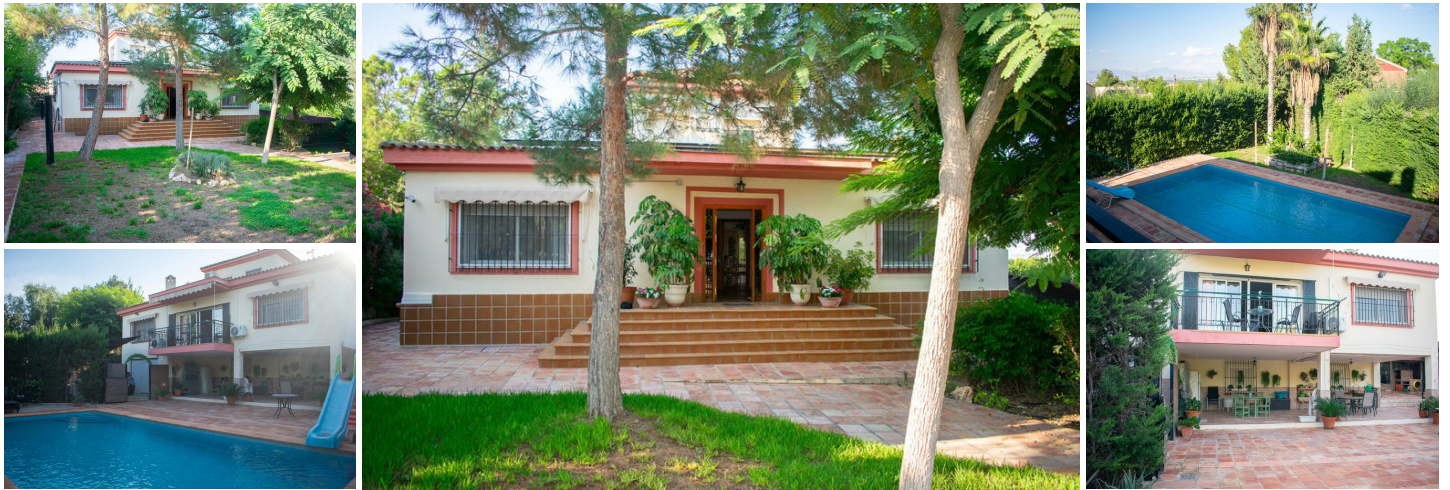


5 soverom Villa til salgs i Molina de Segura, Murcia

525.000€



We present this elegant detached Mediterranean-style villa located in Las Torres de Cotillas , a quiet and well-connected residential area in the Region of Murcia . With 231 m² built on an impressive 1,300 m² plot , this property combines spaciousness, light, and privacy , offering an ideal setting to enjoy Mediterranean living.

The ground floor houses four large bedrooms and two full bathrooms , both with walk-in showers and high-quality finishes. The separate, spacious, and functional kitchen is perfect for those who value space and convenience. The generously sized living and dining room offers a warm and bright atmosphere, ideal for family gatherings or relaxing moments.

On the first floor , we find an open-plan attic currently used as an office , surrounded by panoramic windows that flood the space with natural light and offer views of the garden.

The exterior is a true oasis: it features a charming private pool , a garden area with mature trees , a traditional stone barbecue , an outdoor lounge , a storage room , and an enclosed underground garage , guaranteeing both functionality and comfort.

This property is perfect for those seeking a spacious, single-story villa surrounded by nature and tranquility , yet just minutes from all amenities and the town center. A unique residence in Las Torres de Cotillas , where Mediterranean charm and modern comfort blend seamlessly.

Climate:

The climate on the Costa Cálida, often considered the best in Europe, fosters a very sociable and healthy lifestyle, characterized by outdoor activities, sports and leisure facilities, and exciting, cosmopolitan tourist towns that stand out for their top-tier services, some of them exclusive and considered truly luxurious. All of these cater to a discerning clientele seeking quality and personalized service.

The Costa Cálida boasts over 300 days of sunshine a year. A paradise with excellent connections to all of Europe.

🛏 5 soverom

🚿 2 bad

🏠 231m² Bygg størrelse

📏 1.300m² Tomtestørrelse