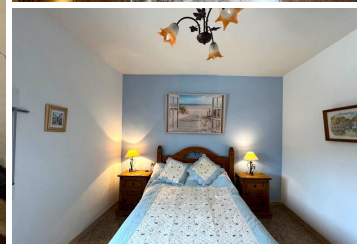
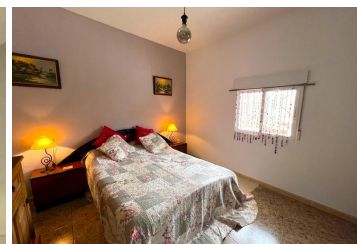
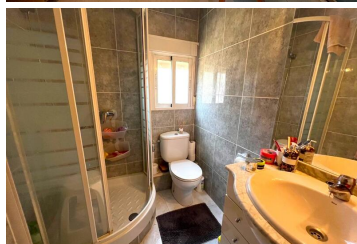


5 soverom Herregård til salgs i Cantoria, Almería

159.995€







AN STUNNING CORTIJO FILLED WITH CHARM NESTLES IN A SERENE HAMLET JUST 15 MINUTES DRIVE FROM THE VILLAGE OF ARBOLEAS AND ALL THE AMENITIES HOWEVER FALLING UNDER THE JURISDICTION ON CANTORIA TOWN HALL. A SHORT DRIVE AWAY IS A LOCAL TRADITIONAL TAPAS BAR.

The property is in a rural location yet set in a hamlet of similar properties so not isolated. It is surrounded by beautiful countryside and views. It has a plot of 824m consisting of a driveway leading down to a double carport and steps to the main garden, with various seating areas to soak in the panoramic views. The gardens are laid to gravel and artificial grass for ease of maintenance with an array of established trees, shrubs and plants. There is a covered pagoda, and a brick-built storage shed plus an outdoor kitchen with electricity and water connected. There is ample space for a pool though this would need to be an above ground pool as the property is on rustic (farm) land and building is not permitted. There are lots of very nice above ground pools on the market now and one could easily be set into the ground slightly and surrounded by decking for example. To the rear of the property is a private courtyard which provides a shaded spot in the heat of the summer months.

The house has 184m of living space over 2 floors and comprises double doors leading into a light and airy hallway, currently used as a dining room with two double bedrooms, one to each side. A wide archway leads to the open-plan lounge with a ceiling fan and a beautifully appointed modern kitchen with plenty of built in storage and granite worktops. There is a 5-ring gas hob with an electric oven, a dishwasher, a washing machine, a sink with a sprinkler tap, and a fridge freezer. A hallway then leads to a downstairs bathroom and then a tiled staircase leads to the second floor.

The first door on the left opens to another bathroom with a walk-in shower, WC, and a sink unit with mirror and lights. Along the hallway, a room currently serving as an office could easily be used as a bedroom. Further along, a cosy room with a feature fireplace and log burner provides a snug upstairs winter lounge. There is also an upstairs seating area with double doors leading out to a terrace with fabulous views. To the left, another double bedroom awaits and to the

 5 soverom
 Wood Stove

 2 bad
 Air conditioning

 824m² Bygg størrelse