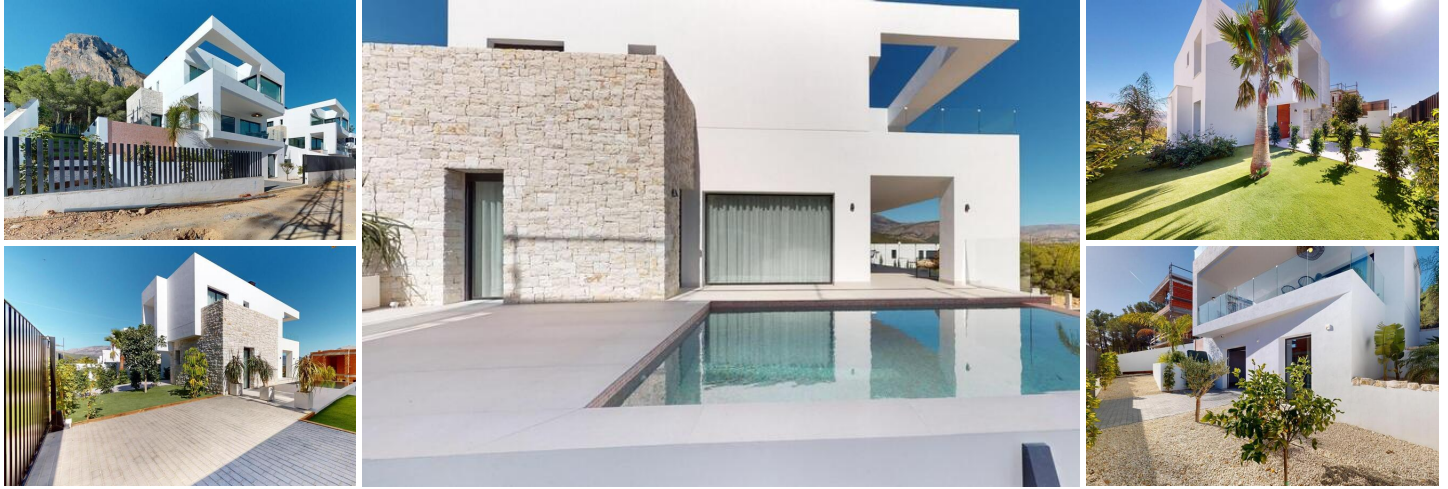


3 slaapkamer Villa Te koop in Polop, Alicante

740.000€



New Build Luxury Villas in Polop with Stunning Views
Exclusive Development of 6 Luxury Villas in Polop

This brand-new promotion of 6 luxury villas is located in Polop, offering breathtaking views of the sea and mountains. Each villa is built on an independent plot with a private swimming pool, parking, barbecue area, and a spacious garden. The villas are spread over two floors plus a semi-basement, with a total of 293 m² on private plots of 393 m².

Spacious Layout and Modern Design




On the main floor, you will find a modern kitchen with an island, an open-plan living and dining area, one bedroom, one bathroom, a covered terrace, and a large open terrace, perfect for enjoying the views of Polop, Altea, and the surrounding mountains. The first floor features two large bedrooms, two bathrooms, and two terraces, both covered and open. The semi-basement can be converted into an independent living space.

High-Quality Finishes and Energy Efficiency

The villas come with a fully equipped kitchen featuring Siemens appliances. Bathrooms are fully fitted with high-end Roca fixtures. Each home has underfloor heating, air conditioning, and an infinity pool. The villas are designed with energy efficiency in mind, boasting an energy certificate rating of A.

Prime Location Close to Amenities

Located just 10 km from Benidorm and Altea, these villas are only a short drive from La Nucía and Alfaz del Pi. The area offers easy access to major points of interest, including the beaches of Benidorm (15 km), Alicante Airport (65 km), and several golf courses (within 10 km). Polop's proximity to these amenities, combined with its tranquil setting,

- | | | |
|---|---|---|
|  3 slaapkamers |  3 badkamers |  293m ² Bouwgrootte |
|  416m ² Perceelgrootte | <input checked="" type="checkbox"/> Garden | <input checked="" type="checkbox"/> Private pool |
| <input checked="" type="checkbox"/> Gated | <input checked="" type="checkbox"/> Views: Sea | <input checked="" type="checkbox"/> Near Schools |
| <input checked="" type="checkbox"/> Near Commercial Center | <input checked="" type="checkbox"/> Air Conditioning: Pre-Installed | <input checked="" type="checkbox"/> Double Bedrooms: 3 |
| <input checked="" type="checkbox"/> Under-Build / Basement | <input checked="" type="checkbox"/> Number of Parking Spaces: 2 | <input checked="" type="checkbox"/> Key Ready |
| <input checked="" type="checkbox"/> Beach: 10000 Meters | <input checked="" type="checkbox"/> Location: Coastal, Mountain | <input checked="" type="checkbox"/> Terrace: 52 Msq. |
| <input checked="" type="checkbox"/> Useable Build Space: 188 Msq. | | |