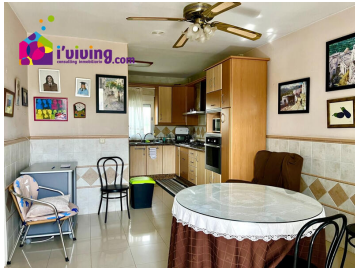


## 6 chambre Duplex à vendre dans Albox, Almería

199.950€











Welcome to the epitome of luxury living in Albox! This magnificent duplex offers a grand total of 220 square meters spread across two meticulously designed floors. With 6 spacious bedrooms, 3 tastefully adorned bathrooms, and 2 convenient garages, this is the perfect space to accommodate families of any size or individuals who desire an abundance of room to breathe.

Step inside and be greeted by an abundance of natural light dancing across the immaculate interiors. The open floor plan seamlessly connects the living, dining, and kitchen areas, creating a harmonious flow that is perfect for entertaining guests or creating unforgettable family moments. The thoughtfully appointed furniture adds a touch of sophistication, creating an overall ambiance of absolute elegance.

Imagine waking up to the glorious Spanish sun streaming through the large windows, filling your home with warmth and positivity. With a delightful terrace, you'll have the perfect spot to savor your morning coffee or delight in a sumptuous alfresco dinner. This outdoor oasis also offers an excellent area to bask in the sun while indulging in a good book or simply relishing in the beauty of your surroundings.

For those warm summer days, fear not, as this marvelous duplex comes equipped with air conditioning throughout, ensuring that you and your loved ones will always stay cool and comfortable, regardless of what the weather has in store.

Located in the heart of Albox, this gem of a property offers unparalleled convenience. Within walking distance, you'll find an array of shops, restaurants, and cafes, satisfying all of your daily needs and culinary desires. Let your taste buds explore the local gastronomy, participate in the vibrant community, and immerse yourself in the rich cultural

- |  |   |  |
|--|---|--|
|  6 chambres                              |  4 salles de bains |  220m <sup>2</sup> Taille de construction |
|  220m <sup>2</sup> Taille de la parcelle |  garage            |  air conditioner                          |
|  elevator                                |  bright            |  |