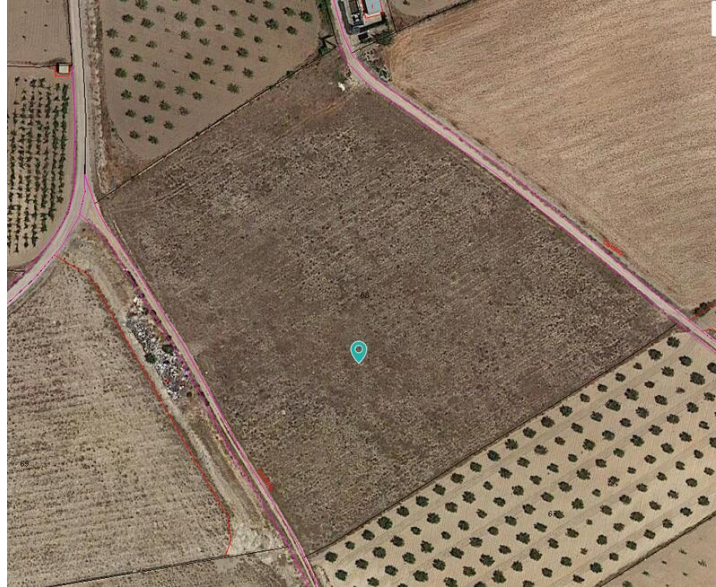







## Casa de Campo en venta en Cañada del Trigo, Alicante



**37.995€**



This legal building plot is located just outside the village of canada de trigo You can walk to a local bar/restuarant You can build 250m2 on the ground floor if you want a two level house you can build 200 + 200 giving you a total of 400m2 build You will can build your dream house in Spain, and enjoy the lovely views from this land As part of the purchase process we get confirmation in writing from the local town hall that you can build on this plot Giving you total peace of mind Please bear in mind that we have over 100 building plots and as such have plenty of choice for you to choose from Also we have been designing and building properties in the area since 2004 and as such have a wealth of knowledge and experience that we can bring to bear when we help you to obtain licenses, choose builders, etc This is an important decision, do not put in the hands of people who are not experienced enough to help you realise your dreams and make the process easy and hassle freeWe are specialists in the Costa Blanca and Costa Calida specialising in the Alicante and Murcia Inland regions with a particular emphasis on Elda, Pinoso, Aspe, Elche and surrounding areas We are an established, well known and trusted company that has built a solid reputation amongst buyers and sellers since we began trading in 2004 We offer a complete service with no hidden charges or surprises, starting with sourcing the property, right through to completion, and an unrivalled after sales service which includes property management, building services, and general help and advice to make your new house a home With a portfolio of well over 1400 properties for sale, we are confident that we can help, so just let us know your preferred property, budget and location, and we will do the rest

-  0 dormitorios
-  16.194m<sup>2</sup> Tamaño de la parcela
-  Telephone

-  0 baños
-  Orientation-East

-  400m<sup>2</sup> Tamaño de construcción
-  Internet