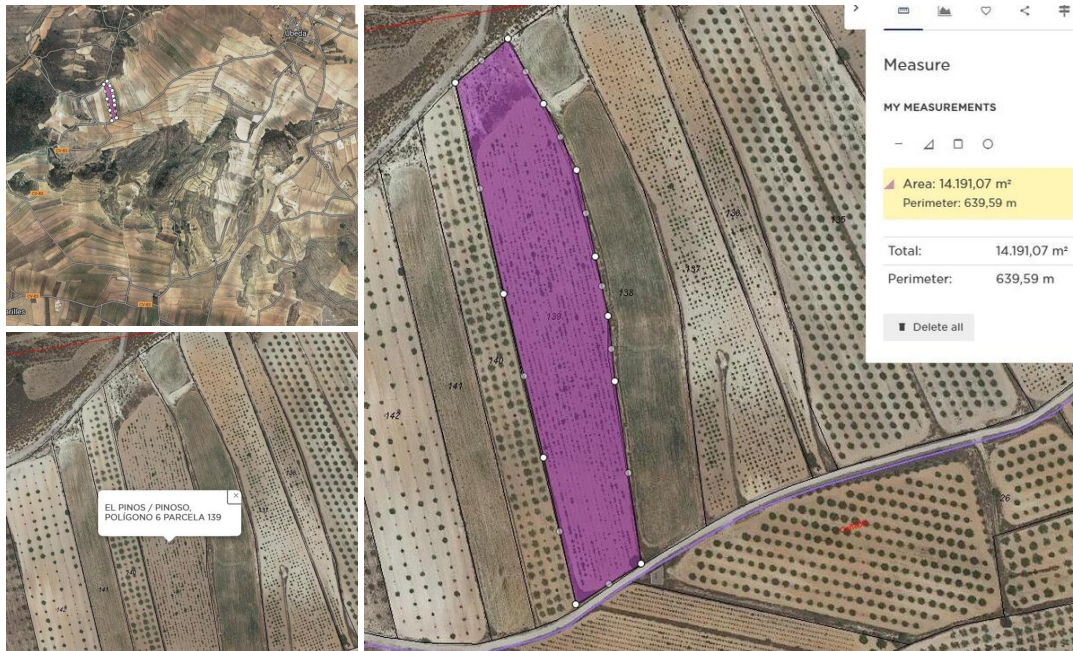


## Sonstiges zu verkaufen in Pinoso, Alicante

35.995€



Introducing a remarkable opportunity to purchase a fully legal building plot located just 5 minutes outside the charming town of Pinoso. This picturesque area is surrounded by stunning vineyards and orchards, providing an idyllic backdrop with breathtaking views over regional parks. The location is ideal for those who enjoy outdoor activities such as walking and cycling, with many scenic routes to explore. This is an excellent chance to build your dream home or invest in a prime piece of real estate in an up-and-coming area. The plots come with written confirmation from the town hall that building is permitted, ensuring a hassle-free process from start to finish. In addition, water and electric are available as is internet, and telephone services. The town hall allows for construction of up to 2% and two levels, providing ample space to create a spacious and luxurious home. With all these amenities and features, this is an opportunity not to be missed. Take advantage of this chance to purchase a piece of paradise in one of the most beautiful areas of Spain. We have a large portfolio of properties in the Costa Blanca and Costa Calida areas, specialising in country properties, villas, fincas, building plots and design and build options in the Alicante and Murcia regions with a particular emphasis on Elda, Monovar, Pinoso, Sax, Villena, Aspe, Fortuna, Albacete and many more surrounding areas. We have been established since 2004 and have decades of experience between the team which we bring to bear to help you find and secure your new dream home. We help you every step of the way to make sure your purchase in Spain is safe and hassle free. We are not here to sell you a property, we are here to help you realise your dream and find what is right for you. With us you are in the safest hands. Contact us now to have a no obligation chat about how you too can realise your dreams.

0 Schlafzimmer

0 Badezimmer

560m<sup>2</sup> Baugröße

14.161m<sup>2</sup> Grundstücksgröße