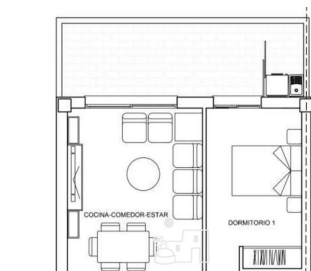








2 soveværelse Lejlighed til langtidsleje i Sant Antoni de Portmany, Ibiza




4.000€ om eftermiddagen



Please contact us by email, we cannot answer by phone or WhatsApp. Summer rental, available from mid May. Newly built flat with 2 bedrooms, 2 bathrooms and integrated kitchen-living-dining room. It has a large terrace with laundry room and parking space. Located in urbanisation with swimming pool and communal areas. Just a few steps from the beach, in second line. It is rented to people with a permanent job with salary or demonstrable solvency. To enter to live you must deliver the amount of 3 monthly payments that correspond to: 1 month of rent, 1 month of legal deposit and (1 month of agency + VAT.). Water, electricity and WIFI are paid separately. In order to make a visit we need you to share with us the following information by contacting us in writing through this advert: Who is going to live in the flat? Number of adults? children? Pets? How many and what kind of pets? And exactly what kind of job do they have, annual job with paychecks? Self-employed? We need this information in order for the owner to give us an appointment to view it. Without detailed information about the work the owner does not allow us to show it. Thank you for your cooperation, we will be happy to make an appointment to view the property. We have many more houses, flats, villas, fincas, commercial premises and land for rent and sale on the island. Thank you for considering us as your real estate agency in Ibiza.

-  2 soveværelser
-  Svømmepøl
-  Ascensor

-  2 badeværelser
-  Aire Acondicionado
-  Piscina

-  80m² Byg størrelse
-  Zonas Comunes
-  Garaje