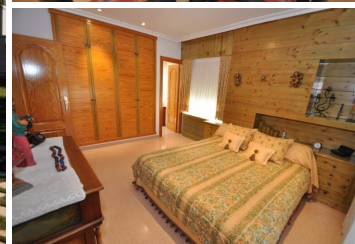


3 soveværelse Villa til salg i Torrevieja, Alicante

249.995€



This is an immaculate ready to move into three bedroom home in the lovely leafy estate of Loma Bada. Just 20 minutes to Alicante and the airport and beaches. The bustling towns of Elda and Petrer are just 5 minutes drive and a 20 minute walk via a shortcut. There are great bars and restaurants and parks. There are excellent spanish schools only a five minute drive away and an international school of Alenda only 15 minutes away. There is a large hospital only ten minutes away. There are theatres, lots of sporting facilities and lots going on. This lovely property has off street parking into a underbuild garage, but there is plenty parking on the road. There is a large entrance hall with a WC and cupboard. There is a lovely bright and sunny pine kitchen with appliances. The lounge has beautiful fitted cabinets and is immaculate. The bedrooms are all beautifully finished. The master bedroom has a terrace with views to the communal pool area. This will make a fantastic family home in a safe and lovely location. Highly recommended. We are specialists in the Costa Blanca and Costa Calida specialising in the Alicante and Murcia Inland regions with a particular emphasis on Elda, Pinoso, Aspe, Elche and surrounding areas. We are an established, well known and trusted company that has built a solid reputation amongst buyers and sellers since we began trading in 2004. We offer a complete service with no hidden charges or surprises, starting with sourcing the property, right through to completion, and an unrivalled after sales service which includes property management, building services, and general help and advice to make your new house a home. With a portfolio of well over 1400 properties for sale, we are confident that we can help, so just let us know your preferred property, budget and location, and we will do the rest. We are specialists in the Costa Blanca and Costa Calida specialising in the Alicante and Murcia Inland regions with a particular emphasis on Elda, Pinoso, Aspe, Elche and surrounding areas. We are an established, well known and trusted company that has built a solid reputation amongst buyers and sellers since we began trading in 2004. We offer a complete service with no hidden charges or surprises, starting with sourcing the property, right through to completion, and an unrivalled after sales service which includes property management, building services, and general help and advice to make your new house a home. With a portfolio of well over 1400 properties for sale, we are

- | | | |
|----------------------------------|-------------------|---------------------------------|
| 3 soveværelser | 3 badeværelser | 240m ² Byg størrelse |
| 265m ² Grundstørrelse | Svømmepøl | Courtyard |
| Indoor Fireplace | Parking, Garage | Pool, Private |
| Storage | Landscaped garden | Fully Furnished |